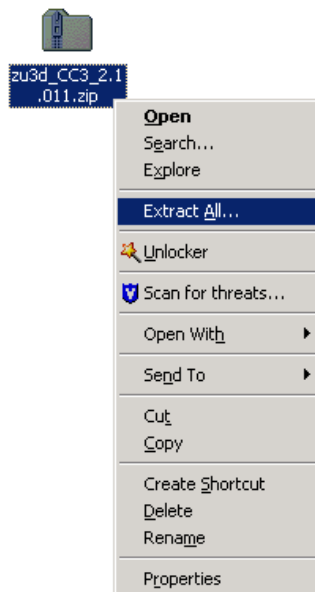




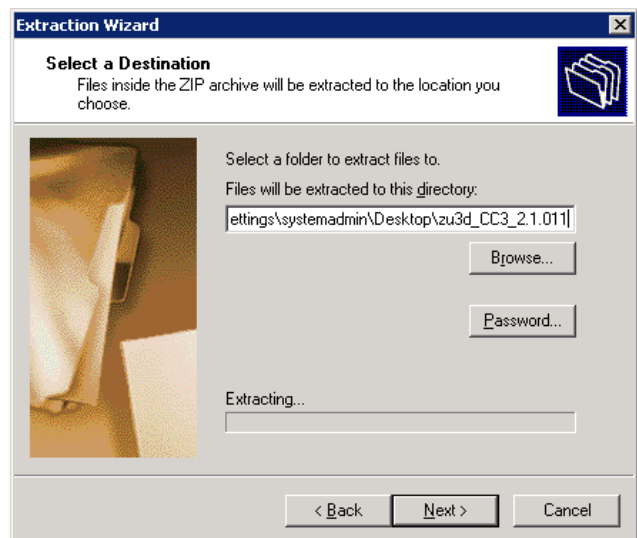
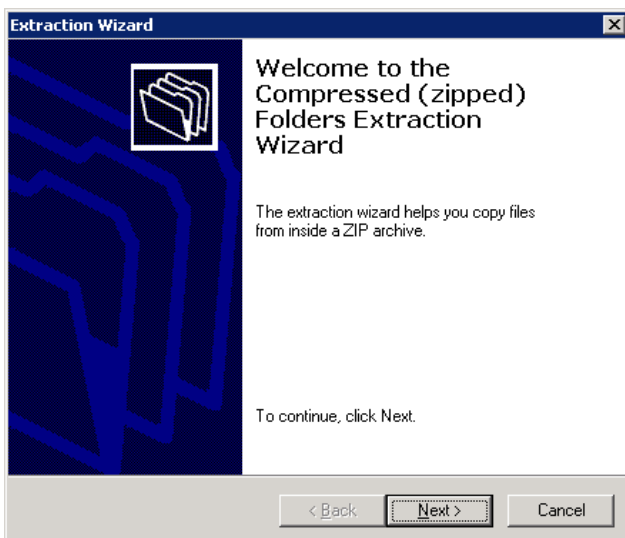
Instructions for installing Zu3D under CC4:

Although there is not a specific Community Connect 4 package, the CC3 package is fully compatible with CC4 networks.

- Login at a workstation as systemadmin, and download 'Zu3D CC3 Package' to a temporary location.
- Right-click on the downloaded file, and select **Extract All...** from the menu:



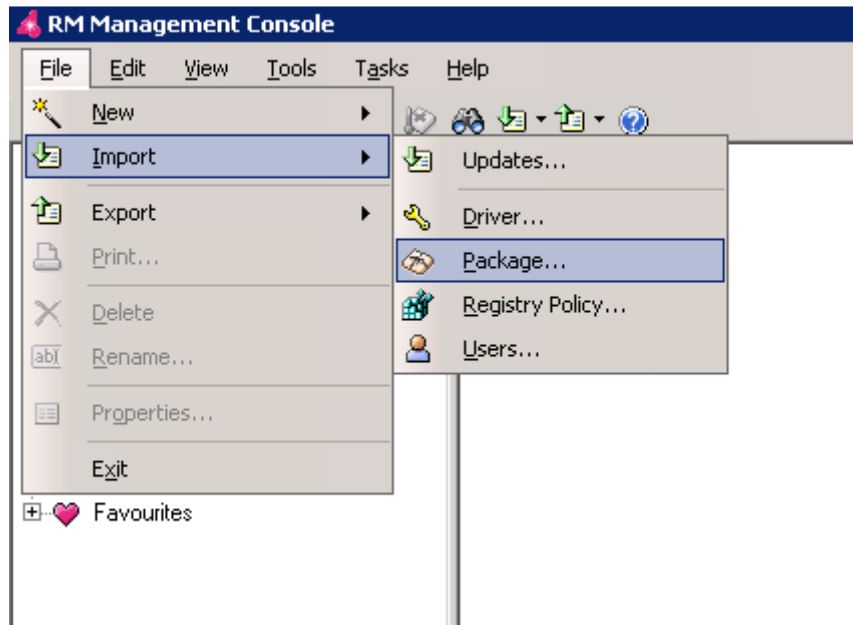
- Follow the process through, and by default, the files will be extracted to a folder in the same place as the zip file.



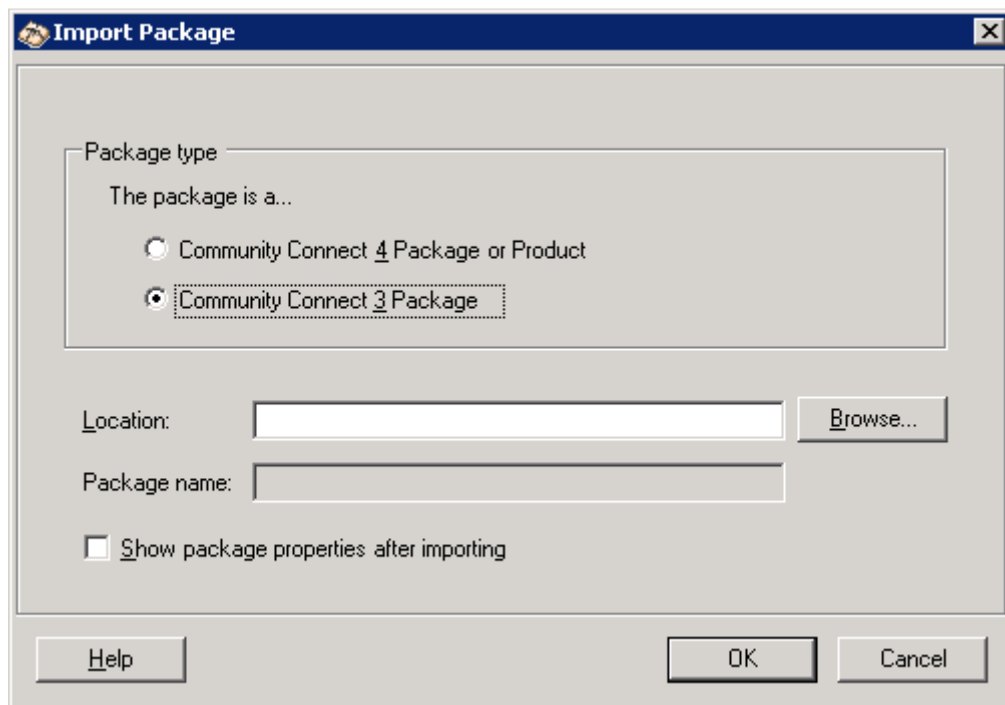
- In You should now see the extracted folder, next to the file you downloaded:



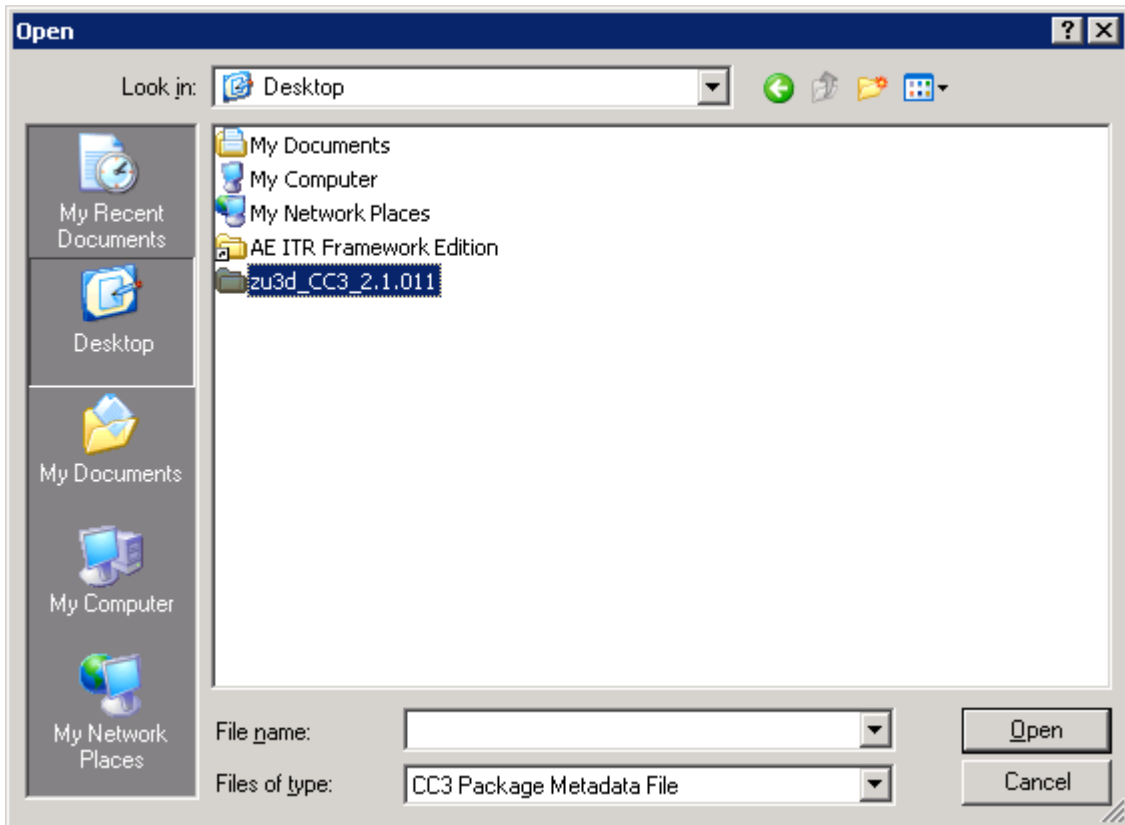
- Open the RM Management console, click on the **File** menu and choose **Import -> Package**



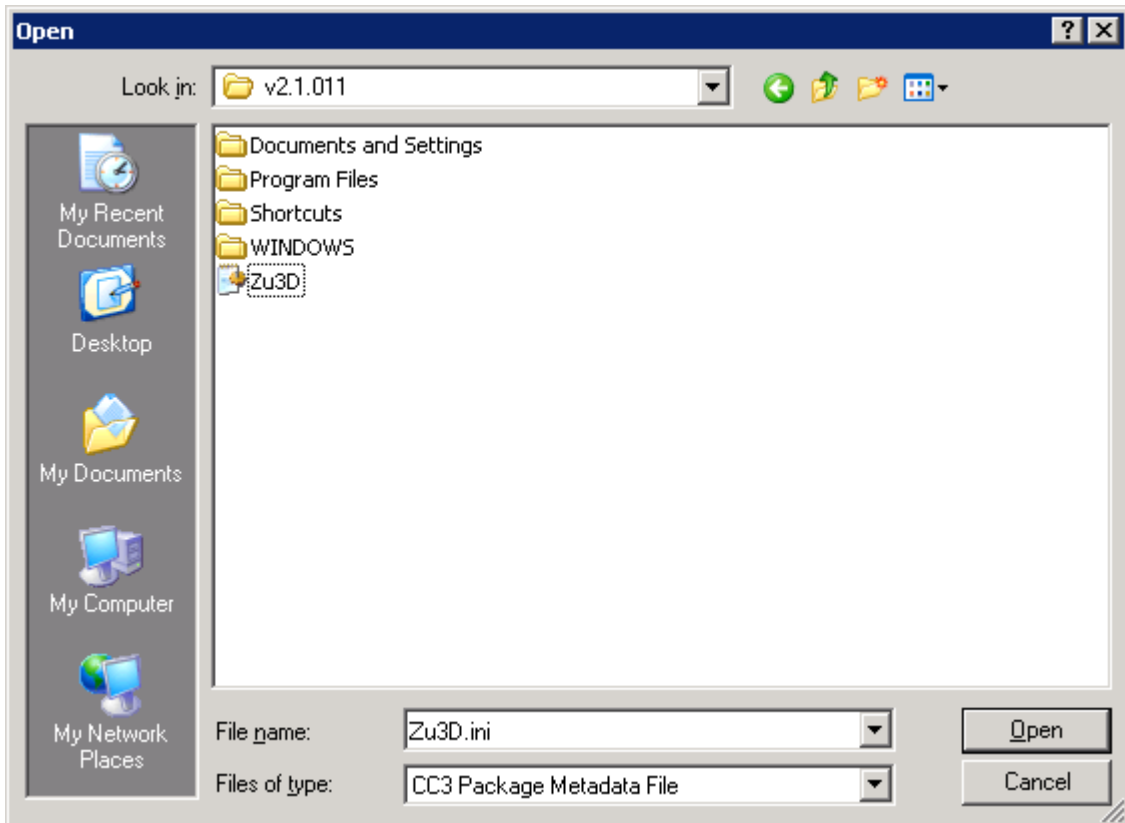
- Under '**Package Type**', choose '**Community Connect 3 Package**':



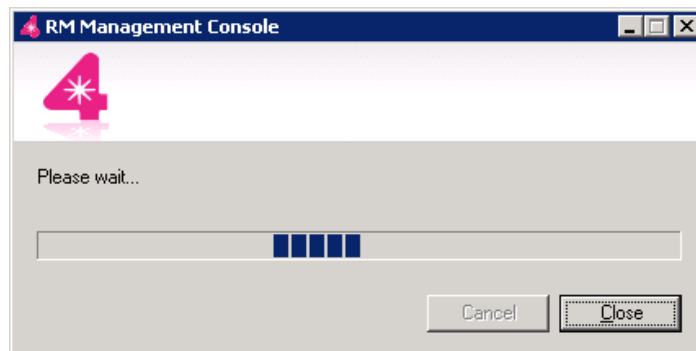
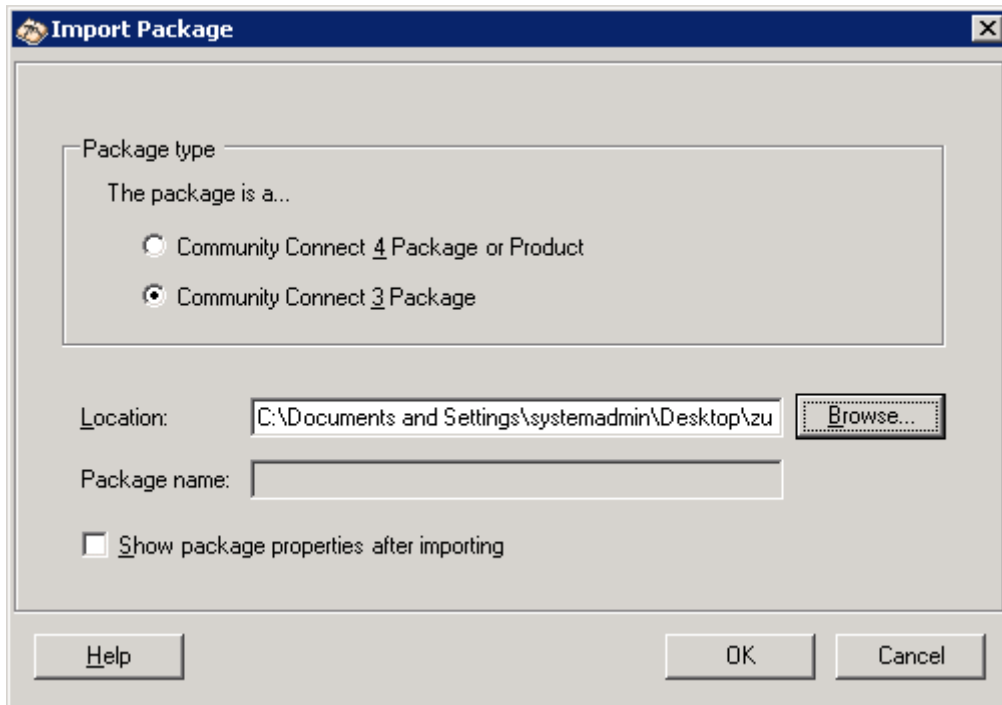
- Click on the **Browse** button and navigate to where you extracted the Zu3D zip file:



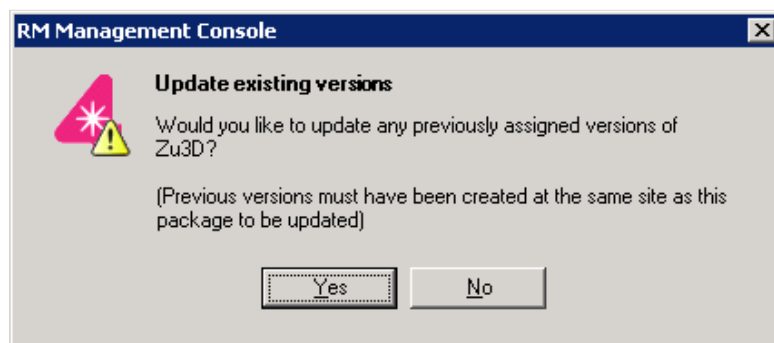
- Inside the ..\Zu3D\v2.1.011\ folder, you should find the file **Zu3D.ini** (the '.ini' part may not be visible). Select this file, then click **Open**.



- Click the **OK** button, and wait for the package to be imported.



- When it asks you if you want to update existing versions of the package, select **'Yes'**:



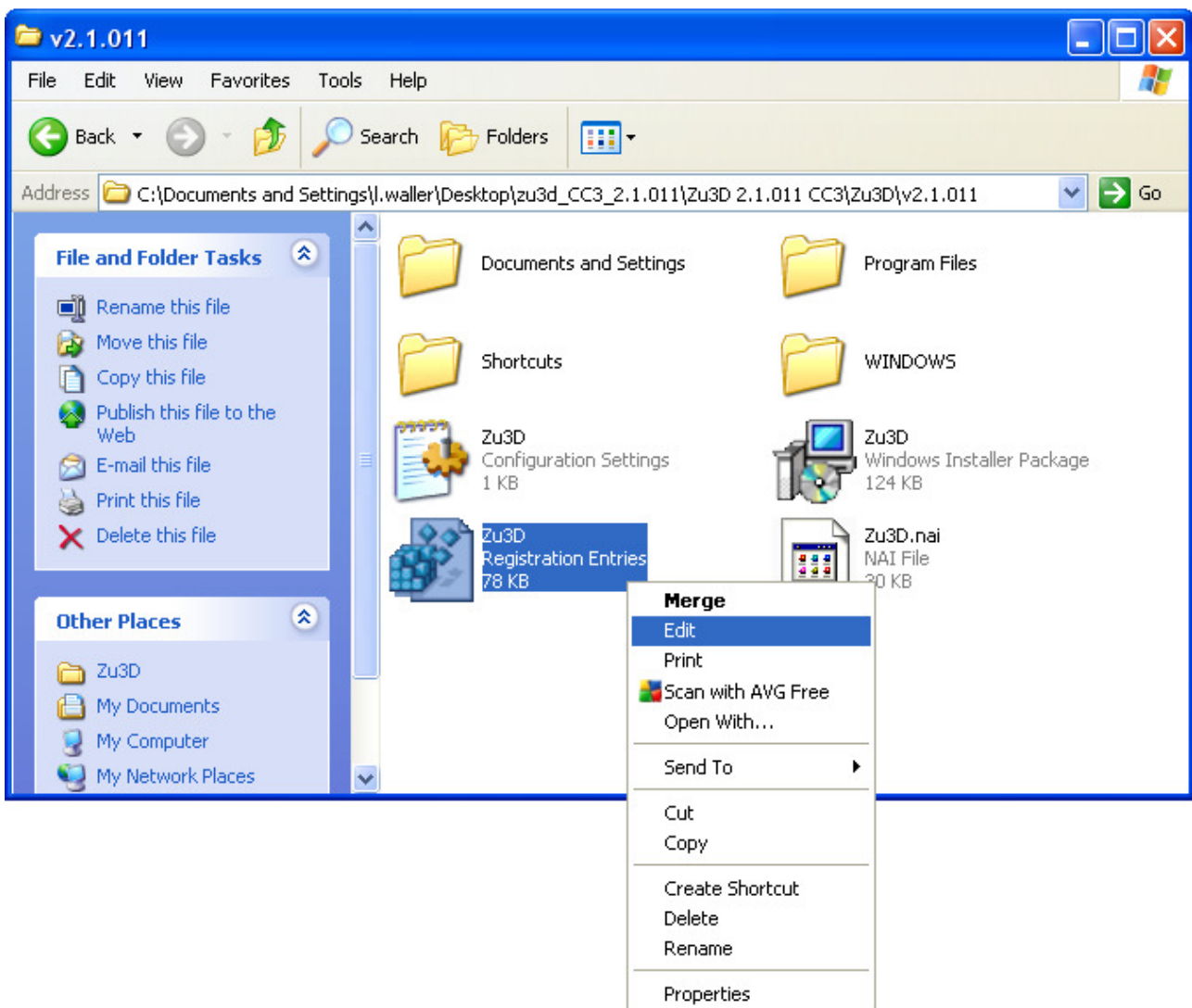
- When the process completes, Zu3D is ready to be allocated to your workstations in the normal way.

To install the soundlibrary, login as systemadmin at a workstation with Zu3D installed. Download and run 'Zu3D Audio Library' (ZuSndLib.msi), and let it install to the default path (P:\ZuLogic Ltd\Zu3D\Soundlibrary\). The soundlibrary will now be available to all Zu3D installations on your CC3 network.

Advanced: Changing the path of the Audio Library

Note, this must be done *before* the package is imported, and before installing the sound library.

- To change the path of the audio library, open the file you extracted, and browse to `..\Zu3D\v2.1.011\`, then right click on `ZU3D.reg`, and choose edit:



- Scroll to the bottom of the file, until you see the line: "MediaLibraryDir"="P:\\ZuLogic Ltd\\Zu3D\\SoundLibrary\\"

```

_15fc9313\\\\"mfc90fra.dll", "{29C1BBD7-1272-3301-A5A0-DE21DB4037BE}", "@WINDOWS\\
"{3390BE69-8061-30AB-B497-32D267B49237}"=MultiSZ:"@WINDOWS\\winsxs\\Manifests\\
"{3A5E8EFF-FFE9-3BFB-9CE1-0B7A43C49371}"=MultiSZ:"@WINDOWS\\winsxs\\x86_Microso
"{61D3B8F0-B470-35F2-8B55-7FCCDC8CF36F}"=MultiSZ:"@WINDOWS\\winsxs\\Manifests\\
"{F9123DB6-22F5-31C7-884E-2B45CE5CC3AB}"=MultiSZ:"@WINDOWS\\winsxs\\x86_Microso
[HKEY_LOCAL_MACHINE\\SOFTWARE\\ZuLogic Ltd]

[HKEY_LOCAL_MACHINE\\SOFTWARE\\ZuLogic Ltd\\Zu3D]

"InstallDir"="@ProgFiles\\ZuLogic Ltd\\Zu3D\\"
"Installed"="1"
"MediaLibraryDir"="P:\\ZuLogic Ltd\\Zu3D\\Media Library"
"MediaLibraryDir-inst"="P:\\ZuLogic Ltd\\Zu3D\\Media Library"
"Version"="2.1.011"
[HKEY_LOCAL_MACHINE\\SYSTEM\\CurrentControlSet\\Services\\wmiApRpl\\Performance]
"First Counter"=dword:00000f32
"First Help"=dword:00000f33
"Last Counter"=dword:00000f36
"Last Help"=dword:00000f37
"Object List"="3890"

```

Edit this to point to your preferred location, ensuring that double backslashes are used instead of single. Save your changes and close the file.

NB: These instructions were created for Zu3D CC3 Package Version 2.1.011. If you have a different version, just replace 2.1.011 with your package version where relevant.